

15 Moor Hall Drive
Sutton Coldfield
West Midlands
B75 6LP
0121 308 4361
bp@benparsonsdesign.co.uk
www.benparsonsdesign.co.uk

REV
PROJECT:
CLIENT:
DRAWING TITLE:
DATE:
SCALE:
JOB NUMBER:
DRAWING NUMBER:
REVISION:

Ashford Barn, Tanworth in Arden
Mr and Mrs Harvey
Detail Sheet 2: Clerestorey cill detail within stonework
MARCH 2023
1:5@A3
1439
AA02

Do not scale from drawing
All dimensions to be checked on site
Copyright of Ben Parsons Design

chosen cladding system off
breather membraned studwork

preformed powder coated
aluminium drip flashing behind
cladding

vertical secret-fixed
stained cedar cladding

upper level cladding stepped out

lintels/beams to SE design

plasterboard finish

glulam beam with internal face aligned
with blockwork over

blind recess

consistent break line between upper ash
faced ply and lower skimmed plasterboard

570

125

2310

32

3033

2435

201

B8

25

3005

150

100mm

200mm

300mm

400mm

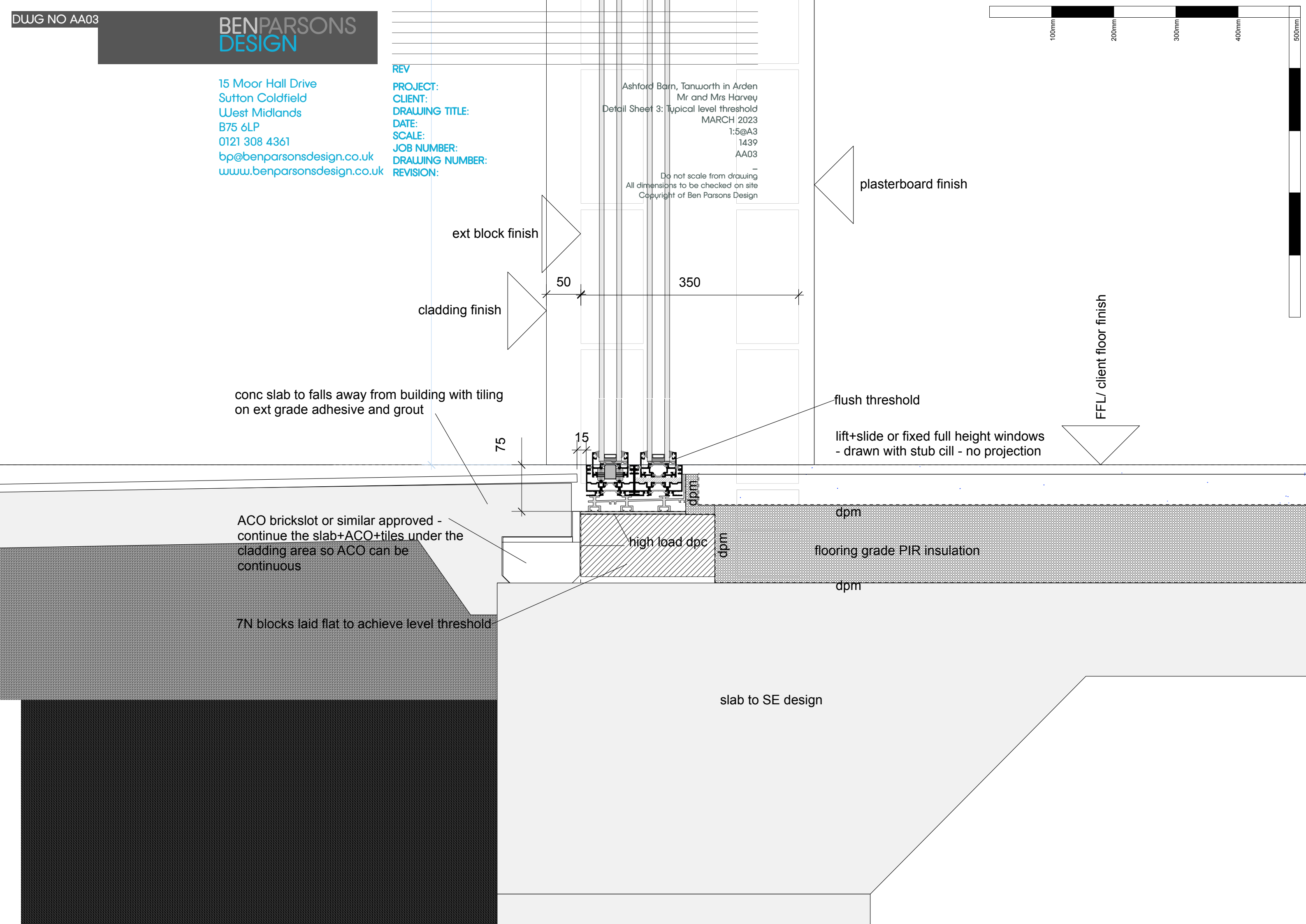
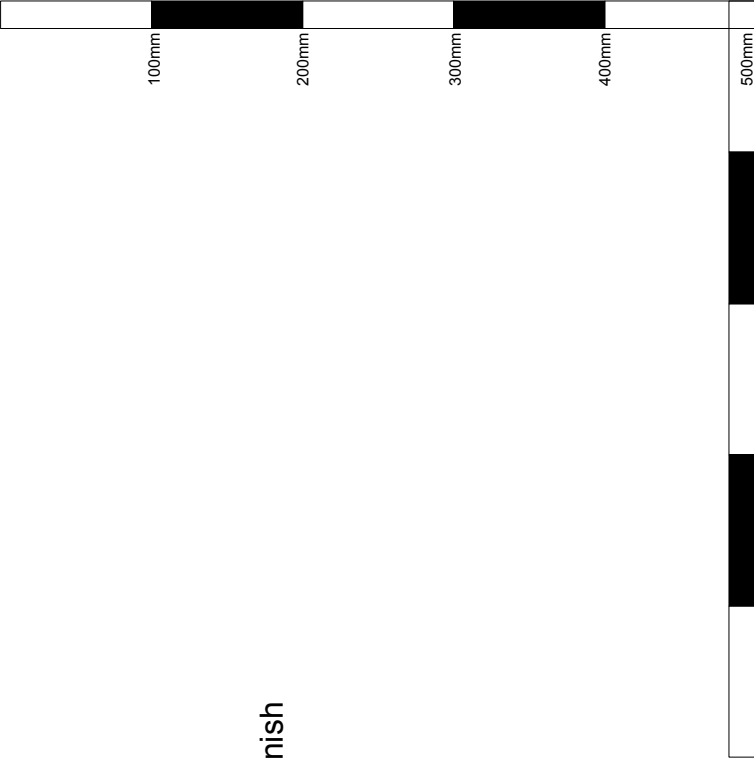
500mm

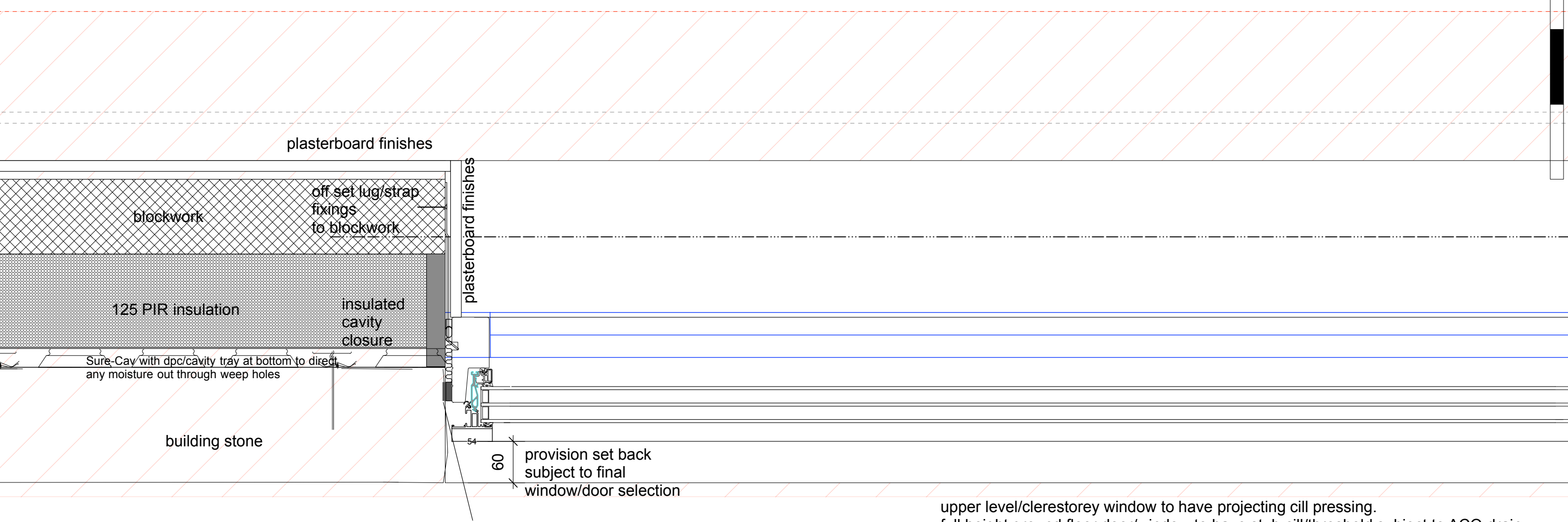
15 Moor Hall Drive
Sutton Coldfield
West Midlands
B75 6LP
0121 308 4361
bp@benparsonsd.com
www.benparsonsd.com

REV
PROJECT:
CLIENT:
DRAWING TITLE:
DATE:
SCALE:
JOB NUMBER:
DRAWING NUMBER:
REVISION:

Ashford Barn, Tanworth in Arden
Mr and Mrs Harvey
Detail Sheet 3: Typical level threshold
MARCH 2023
1:5@A3
1439
AA03

Do not scale from drawing
All dimensions to be checked on site
Copyright of Ben Parsons Design





DWG NO AA05



REV

PROJECT:

CLIENT:

DRAWING TITLE:

DATE:

SCALE:

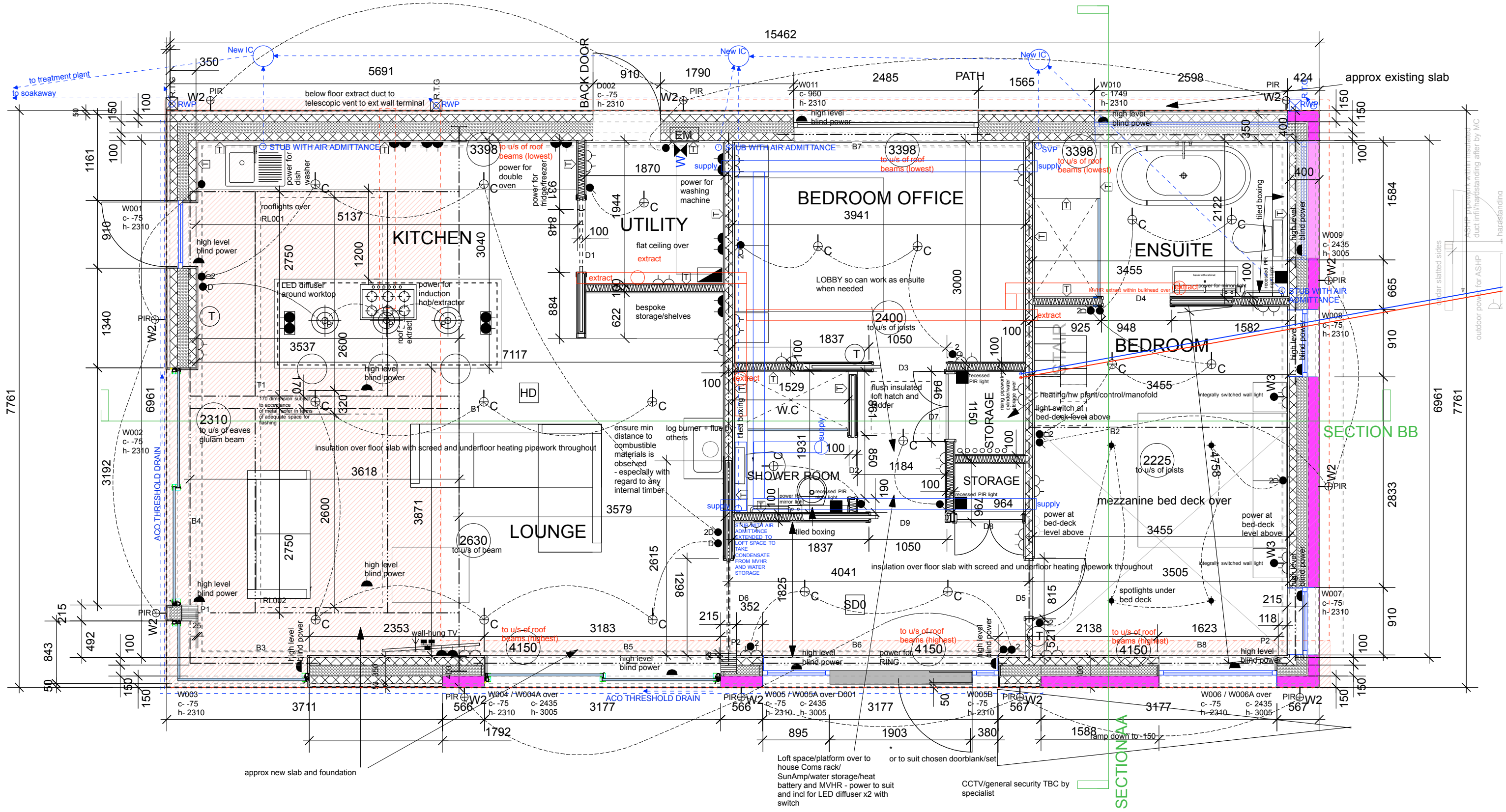
JOB NUMBER:

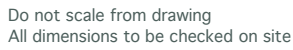
DRAWING NUMBER:

REVISION:

Do not scale from drawing
All dimensions to be checked on site
Copyright of Ben Parsons Design

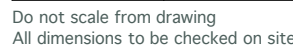
ALL VERTICAL SET OUT FROM FFL





Ashford Barn, Tanworth in Arden
Mr & Mrs Harvey
Proposed Roof Plan
April 2023
1:50 at A3
04

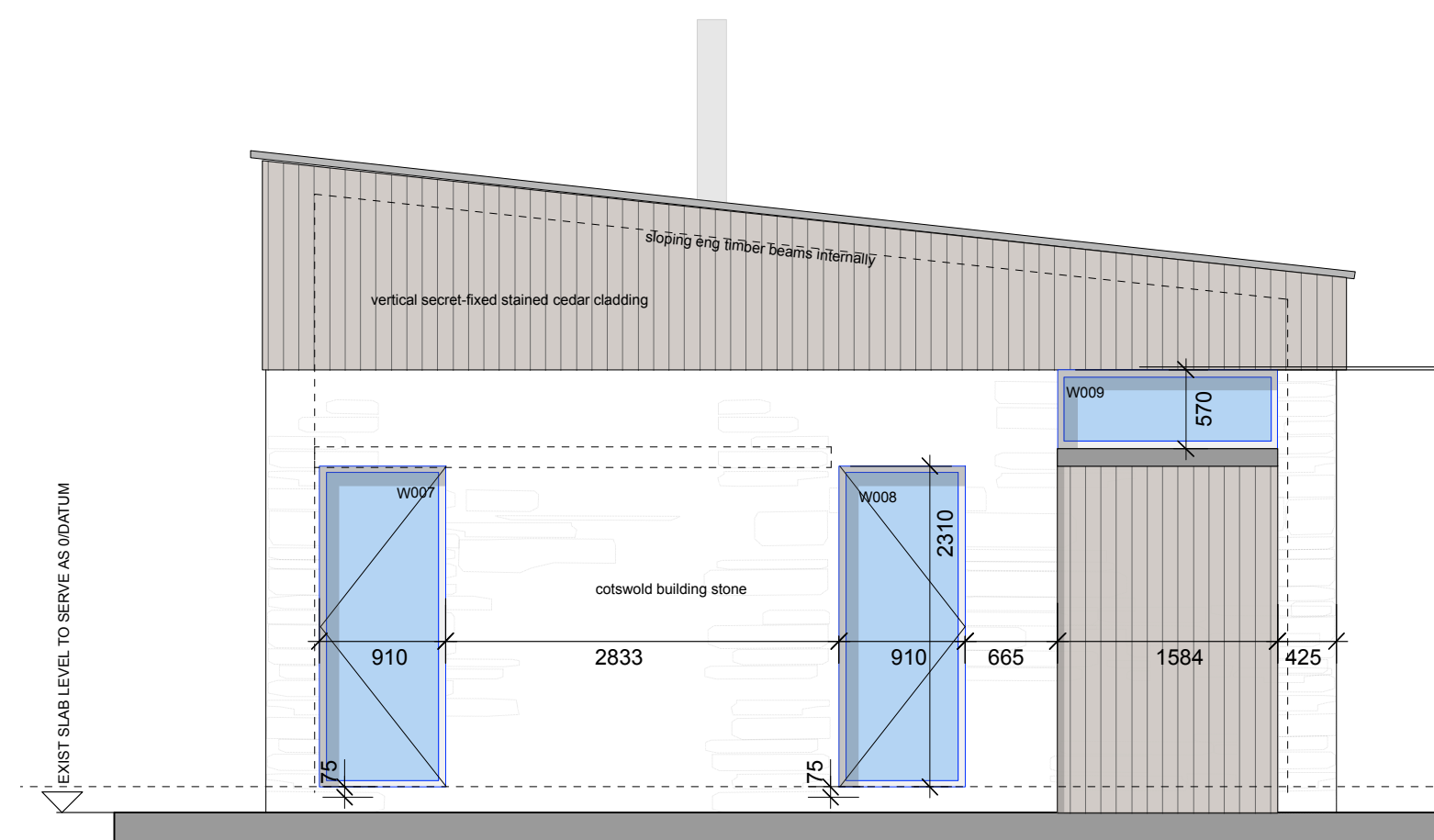




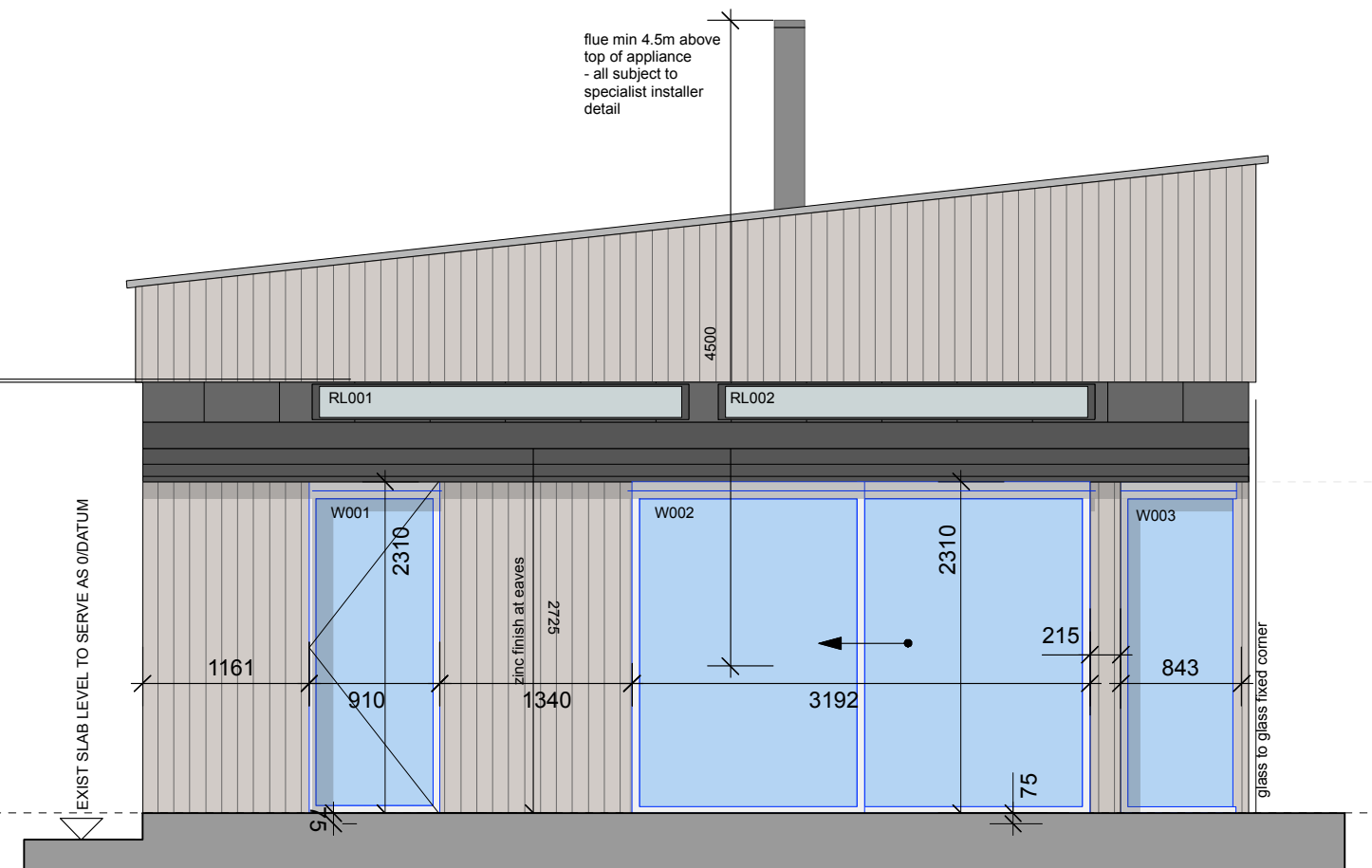
REVISION:

05

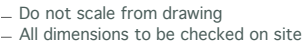




Proposed North West Elevation



Proposed South West Elevation

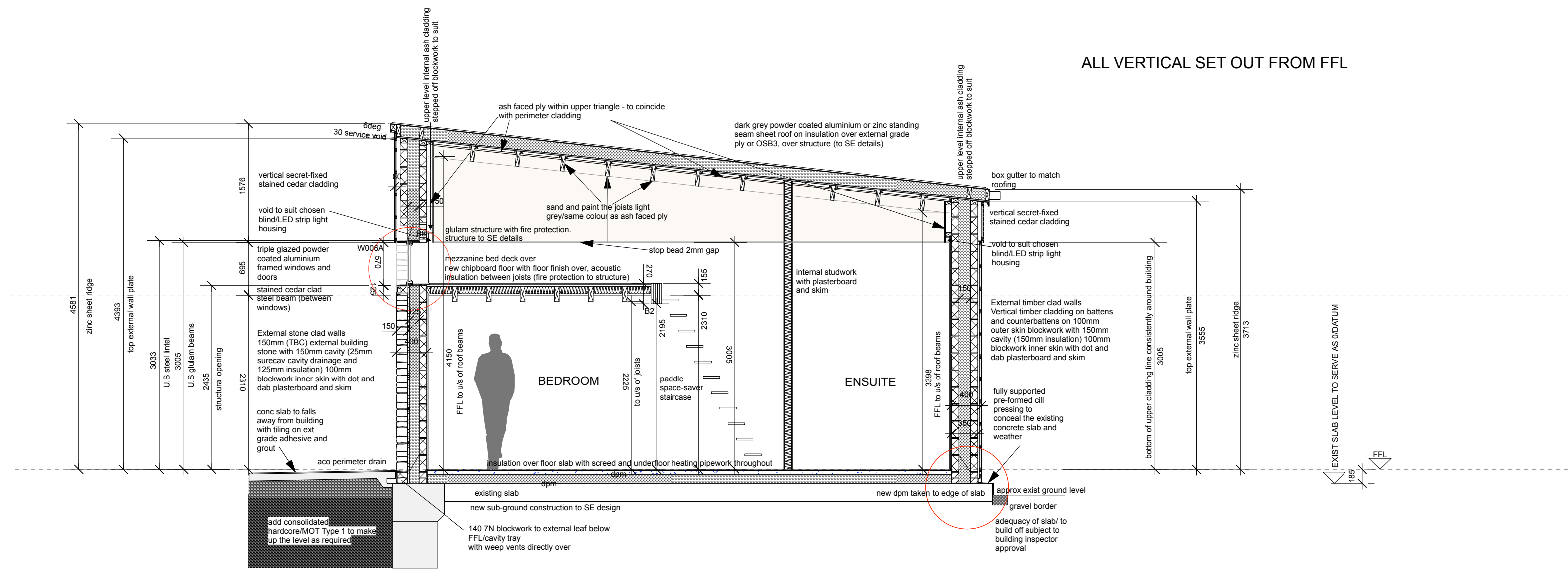


PROJECT:
CLIENT:
DRAWING TITLE:
DATE:
SCALE:
DRAWING NUMBER:
REVISION:

Architectural elevation drawing of a building facade. The drawing includes the following elements and dimensions:

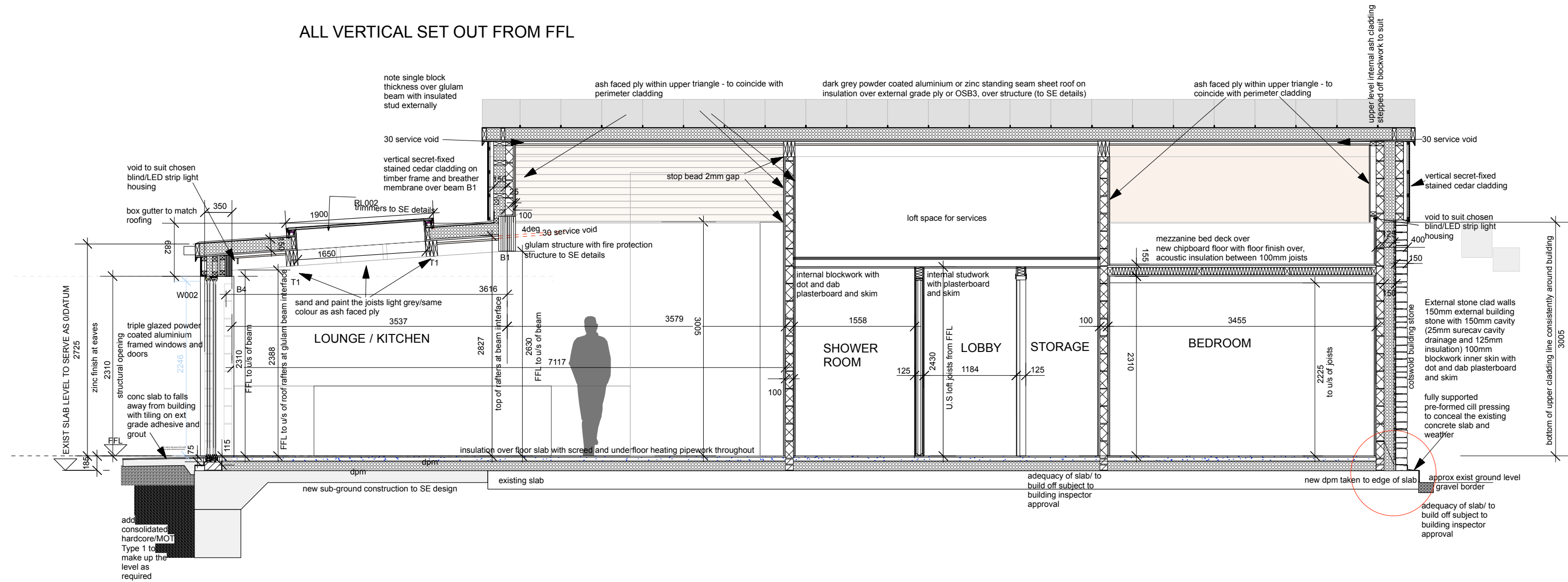
- Overall Dimensions:**
 - Top width: 11796
 - Top right width: 3711
 - Right side height: 2725
- Roof:** dark grey powder coated aluminium or zinc standing seam sheet roof.
- Cladding:** vertical secret-fixed stained cedar cladding.
- Windows and Doors:**
 - W010: 2598 (width) x 1749 (height)
 - W011: 2485 (width) x 1355 (height)
 - D002: 910 (width) x 2310 (height)
- Other Dimensions and Labels:**
 - 424: dimension at the bottom left corner.
 - 1565: dimension between W010 and W011.
 - 1790: dimension between W011 and D002.
 - 3005: dimension for the bottom of upper cladding line.
 - 3555: dimension for the top external wall plate.
 - 3713: dimension for the zinc sheet ridge.
 - 6: dimension at the bottom right corner.
 - Labels: "cotswold building stone", "bottom of upper cladding line consistently around building", "top external wall plate", "zinc sheet ridge", "zinc finish at eaves".
- Notes:**
 - flue min 4.5m above top of appliance - all subject to specialist installer detail
 - fully supported pre-formed cill pressing to conceal the existing concrete slab and weather
 - EXIST SLAB LEVEL TO SERVE AS 0 DATUM

Proposed North East Elevation



SECTION AA

ALL VERTICAL SET OUT FROM FFL



SECTION BB

13A DOUBLE SWITCHED SOCKET AT LOW LEVEL MIN 450H

DOUBLE SWITCHED SOCKET AT HIGH LEVEL MAX 1200H

DOUBLE SWITCHED SOCKET WORKTOP RECESSED FROM KITCHEN SUPPLIER RANGE

SHAVER SOCKET

INCOMING BT SUPPLY/ INDEPENDENT MASTER TELEPHONE POINT LOCATED AT POINT OF INCOMING SUPPLY

INDEPENDENT MASTER TELEPHONE POINT

DEPENDENT TV POINT/SINGLE COAXIAL

GROUPED/ADJOINED TV POINT (DUAL CO-AX FOR SATALITE COMPATABILITY), SECONDAY TELEPHONE, ETHERNET/CAT 6 DATA
TV JACK CONNECTED TO LABTEC SLX AERIAL AMPLIFIERS WITH DIGITAL BYPASS DISTRIBUTION BOARD (SATALITE BY OTHERS). DISTRIBUTION BOARD LOCATION TBC.
LABGEAR WIDEBAND DIGITAL AERIAL. LOCATION TBC.
TYPE OF TV POINT ASSUMES NO ISOLOATION REQUIRED BETWEEN AERIAL - TBC BY SPECIALIST AND SPEC ALTERED AS REQ'D

WIRING LOCATIONS FOR SONOS - PROVISIONAL LOCATIONS - TBC BY SPECIALIST INSTALLER.
ALL SPEAKER POINTS TO BE INDIVIDUALLY WIRED BACK TO AMP POINT - NO DAISY CHAINING.
AVOID LAYING WIRES OVER OTHER ELECTRICAL WIRING TO AVOID INTERFERENCE.

INDICATIVE AMP LOCATION FOR SONOS SYSTEM

RCD PROTECTED EXTERNAL DOUBLE SWITCHED SOCKET AT HIGH LEVEL MAX 1200H

5AMP SWITCHED TABLE LAMP CIRCUIT (NON FUSED)

HORMAN PROMATIC ELECTRICAL GARAGE DOOR OPERATOR

HARD WIRED DOORBELL/RINGER WITH ST ST PUSH

MODFIRE MAINS POWERED SMOKE DETECTOR (OPTICAL) WITH BATTERY BACKUP TO BS 5446 PART:1, INTERLINKED WHEN MULTIPLE UNITS INSTALLED

MODFIRE MAINS POWERED SMOKE DETECTOR (IONISATION) WITH BATTERY BACKUP TO BS 5446 PART:1, INTERLINKED WHEN MULTIPLE UNITS INSTALLED

MODFIRE MAINS POWERED HEAT DETECTOR AICO E1 WITH BATTERY BACKUP TO BS 5446 PART:1, INTERLINKED WHEN MULTIPLE UNITS INSTALLED

HARDWIRED CARBON MONOXIDE DETECTOR WITH BATTERY BACK-UP TO BS EN 50291:2001

ELECTRIC INCOMING SUPPLY/ METER

MECH EXTRACT LINKED TO MAIN ROOM LIGHT WITH ISOLATING SWITCH OVER DOOR:
AIRFLOW ICON 15 TO W.Cs REF 72591501
AIRFLOW ICON 15 TO BATHROOMS + ENSUITES REF 72591601
VIA 100 FLEXIBLE DUCT TO WALL OR ROOF TERMINAL.
KITCHEN EXTRACT BY KITCHEN SUPPLIER

CONSUMER UNIT: NEW EATON CORPORATION MEMERA 2000 AD INSULATED ISOLATED UNIT WITH RCCB AND 12 WAY IN-LINE UNITS IN ACCORDANCE WITH 17TH EDITION OF BUILDING REGULATIONS PART P, LOCATED AS PER DRAWINGS AND SECURELY FIXED TO WALL

GAS METER

GAS SUPPLY ENTRY/ STOP VALVE

INCOMING WATER MAIN/STOP VALVE

BOILER WITH BALANCED FLUE AND WALL TERMINAL HEATING MANIFOLD IN CLOSE PROXIMITY (NOT SHOWN ON DRAWINGS FOR CLARITY)

HOT WATER TANK WITH UNDERFLOOR

WALL MOUNTED, CHROME, DUAL FUEL HEATED TOWEL RAIL WITH THERMOSTATIC CONTROL

RADIATOR

REMOTE THERMOSTATIC CONTROL FOR U/F HEATING

1 WAY LIGHT SWITCH MAX 1200H

2 WAY LIGHT SWITCH MAX 1200H

3 WAY LIGHT SWITCH MAX 1200H

DIMMER LIGHT SWITCH MAX 1200H

GROUP SWITCHING TOGETHER AS FOLLOWS - I.E:
IS A 1WAY/TWO GANG SWITCH

LED FLEXIBLE STRIP FOR UNDER WALL-MOUNTED KITCHEN/ W.C/ BATHROOM/ ENSUITE CUPBOARDS: 350MM LONG LED STRIPS (WITH O/A LENGTH AS PER DRAWING) WITH STRIP CONNECTOR CABLES/PLUGS/DRIVER WITH SWITCHED SPUR UNDER KITCHEN WALL MOUNTED CUPPBOARDS

13A DOUBLE SWITCHED SOCKET AT LOW LEVEL MIN 450H

DOUBLE SWITCHED SOCKET AT HIGH LEVEL MAX 1200H

DOUBLE SWITCHED SOCKET WORKTOP RECESSED FROM KITCHEN SUPPLIER RANGE

SHAVER SOCKET

INCOMING BT SUPPLY/ INDEPENDENT MASTER TELEPHONE POINT LOCATED AT POINT OF INCOMING SUPPLY

INDEPENDENT MASTER TELEPHONE POINT

DEPENDENT TV POINT/SINGLE COAXIAL

GROUPED/ADJOINED TV POINT (DUAL CO-AX FOR SATALITE COMPATABILITY), SECONDAY TELEPHONE, ETHERNET/CAT 6 DATA
TV JACK CONNECTED TO LABTEC SLX AERIAL AMPLIFIERS WITH DIGITAL BYPASS DISTRIBUTION BOARD (SATALITE BY OTHERS). DISTRIBUTION BOARD LOCATION TBC.
LABGEAR WIDEBAND DIGITAL AERIAL. LOCATION TBC.
TYPE OF TV POINT ASSUMES NO ISOLOATION REQUIRED BETWEEN AERIAL - TBC BY SPECIALIST AND SPEC ALTERED AS REQ'D

WIRING LOCATIONS FOR SONOS - PROVISIONAL LOCATIONS - TBC BY SPECIALIST INSTALLER.
ALL SPEAKER POINTS TO BE INDIVIDUALLY WIRED BACK TO AMP POINT - NO DAISY CHAINING.
AVOID LAYING WIRES OVER OTHER ELECTRICAL WIRING TO AVOID INTERFERENCE.

INDICATIVE AMP LOCATION FOR SONOS SYSTEM

RCD PROTECTED EXTERNAL DOUBLE SWITCHED SOCKET AT HIGH LEVEL MAX 1200H

5AMP SWITCHED TABLE LAMP CIRCUIT (NON FUSED)

HORMAN PROMATIC ELECTRICAL GARAGE DOOR OPERATOR

HARD WIRED DOORBELL/RINGER WITH ST ST PUSH

MODFIRE MAINS POWERED SMOKE DETECTOR (OPTICAL) WITH BATTERY BACKUP TO BS 5446 PART:1, INTERLINKED WHEN MULTIPLE UNITS INSTALLED

MODFIRE MAINS POWERED SMOKE DETECTOR (IONISATION) WITH BATTERY BACKUP TO BS 5446 PART:1, INTERLINKED WHEN MULTIPLE UNITS INSTALLED

MODFIRE MAINS POWERED HEAT DETECTOR AICO E1 WITH BATTERY BACKUP TO BS 5446 PART:1, INTERLINKED WHEN MULTIPLE UNITS INSTALLED

HARDWIRED CARBON MONOXIDE DETECTOR WITH BATTERY BACK-UP TO BS EN 50291:2001

ELECTRIC INCOMING SUPPLY/ METER

MECH EXTRACT LINKED TO MAIN ROOM LIGHT WITH ISOLATING SWITCH OVER DOOR:
AIRFLOW ICON 15 TO W.Cs REF 72591501
AIRFLOW ICON 15 TO BATHROOMS + ENSUITES REF 72591601
VIA 100 FLEXIBLE DUCT TO WALL OR ROOF TERMINAL.
KITCHEN EXTRACT BY KITCHEN SUPPLIER

CONSUMER UNIT: NEW EATON CORPORATION MEMERA 2000 AD INSULATED ISOLATED UNIT WITH RCCB AND 12 WAY IN-LINE UNITS IN ACCORDANCE WITH 17TH EDITION OF BUILDING REGULATIONS PART P, LOCATED AS PER DRAWINGS AND SECURELY FIXED TO WALL

GAS METER

GAS SUPPLY ENTRY/ STOP VALVE

INCOMING WATER MAIN/STOP VALVE

BOILER WITH BALANCED FLUE AND WALL TERMINAL HEATING MANIFOLD IN CLOSE PROXIMITY (NOT SHOWN ON DRAWINGS FOR CLARITY)

HOT WATER TANK WITH UNDERFLOOR

WALL MOUNTED, CHROME, DUAL FUEL HEATED TOWEL RAIL WITH THERMOSTATIC CONTROL

RADIATOR

REMOTE THERMOSTATIC CONTROL FOR U/F HEATING

WATER STOP VALVE

OUTSIDE TAP

SOIL+VENT PIPE

STUB STACK WITH AIR ADMITTANCE

HOPPER

RAINWATER DOWNPIPE

RODDABLE BACK INLET GULLEY

RODDABLE TRAPPED GULLY

BOTTLE GULLY

RODDING EYE

AS BELOW WITH SHALLOW TRAP FOR CONNECTION TO FLOOR OUTLET

FLOOR RECESSED, FLUSH WITH FFL, TRAPPED /RODDABLE ADAPTOR 40-110 TO ALLOW DIRECT CONNECTION TO UNDERGROUND DRAIN

ASSUMED POSITION OF EXISTING FOUL / COMBINED DRAIN

250 DIAM SHALLOW ACCESS INSPECTION CHAMBER

450 DIAM INSPECTION CHAMBER

FOUL / WASTE

STORM

COMBINED

PERFORATED CONC. SOAKAWAY

ACO BRICKSLOT CHANNEL DRAIN LAID FLAT WITH SUMP UNIT + RODDABLE SIDE DRAIN CONNECTION AT ONE END

LED

<https://www.astrolighting.com/products/5739-minima-ro-und-adjustable-fire-rated>

https://www.oceanlighting.co.uk/downlights-c76/astro-1249036-minima-slimline-25-fire-rated-ip65-downlight-matt-white-p36729/s40273?cid=GBP&gclid=CjwKCAjwtfqKBhBoEiwAZuesiBRUC5IAA-qHCQuSiCrptuexgg-tRl0gXi2f6U3MkiIVT417dHKK2xoCGSAQAvD_BwE

https://www.lights2go.co.uk/shop-by-product-c34/outdoor-lighting-c1/astro-1317011-mast-outdoor-wall-light-textured-black-p26965/s27040?gclid=Cj0KCQjw3v6SBhCjZAsRCyIRAHu0WustjySbSoqjQTUI8ylW84hWcN3xx4h53waQC0guOmCYt0dMCQaAi2uEALw_wcB

https://www.lights2go.co.uk/shop-by-product-c34/outdoor-lighting-c1/astro-1338001-tivola-led-outdoor-marker-light-textured-black-p11358/s11402?gclid=Cj0KCQjw3v6SBhCjZAsRCyIRAHu0WustjySbSoqjQTUI8ylW84hWcN3xx4h53waQC0guOmCYt0dMCQaAi2uEALw_wcB

https://www.firstchoicelighting.co.uk/astro-977-borgo-trimless-65.htm?gclid=Cj0KCQjw3v6SBhCjZAsRCyIRAHu0WustjySbSoqjQTUI8ylW84hWcN3xx4h53waQC0guOmCYt0dMCQaAi2uEALw_wcB

<https://www.dusklights.co.uk/astro-borgo-90-white-3000k-led-recessed-wall-or-plinth-light-p975>

https://www.firstchoicelighting.co.uk/matt-white-3000k-led-recess-ed-spotlight.html?gclid=Cj0KCQIApL2QBhC8ARIsAGMm-KFBUs7FGVEgJjbzqG-RSudl-aCHjJUUZCYUNA4LqA4sfNI5rLFCb3saAtWPEALw_wcB

<https://www.oceanlighting.co.uk/wall-lights-c60/astro-0411-luga-1-light-switched-wall-light-painted-silver-white-glass-1074001-p24072>

https://www.firstchoicelighting.co.uk/astro-977-borgo-trimless-65.htm?gclid=Cj0KCQjw3v6SBhCjZAsRCyIRAHu0WustjySbSoqjQTUI8ylW84hWcN3xx4h53waQC0guOmCYt0dMCQaAi2uEALw_wcB

<https://www.dusklights.co.uk/astro-borgo-90-white-3000k-led-recessed-wall-or-plinth-light-p975>

https://www.lights2go.co.uk/shop-by-product-c34/outdoor-lighting-c1/astro-1338001-tivola-led-outdoor-marker-light-textured-black-p11358/s11402?gclid=Cj0KCQjw3v6SBhCjZAsRCyIRAHu0WustjySbSoqjQTUI8ylW84hWcN3xx4h53waQC0guOmCYt0dMCQaAi2uEALw_wcB

<https://www.castlegatelights.co.uk/eglo-lighting-98097-manfria-integrated-led-outdoor-bollard-light-in-anthracite-and-white-finish-p53077>

urce=google&utm_campaign=Google%20Shopping&campaignid=14654411474&adgroupid=128524150738&keyword=&device=c&gclid=CjwKCAjw2OiaBhBSEiwAh2ZSPzDWnT6nt1uxyo-gyAimkizgu8fHeeJZnSothflgDyvVa9KGbX8ashoCHjMQAvD_BwE

15 Moor Hall Drive
Sutton Coldfield
West Midlands
B75 6LP
0121 308 4361
bp@benparsonsdesign.co.uk
www.benparsonsdesign.co.uk

REV

PROJECT:

CLIENT:

DRAWING TITLE:

DATE:

SCALE:

JOB NUMBER:

DRAWING NUMBER:

REVISION:

Ashford Barn, Tanworth in Arden
Mr and Mrs Harvey
Clerestorey Door/Horizontal window intermediate cill
MARCH 2023
1:5@A3
1439
AA01

Do not scale from drawing
All dimensions to be checked on site
Copyright of Ben Parsons Design

upper cladding finish

upper level cladding stepped out

lintels/beams to SE design

chosen cladding system off
breather membraned insulated
studwork

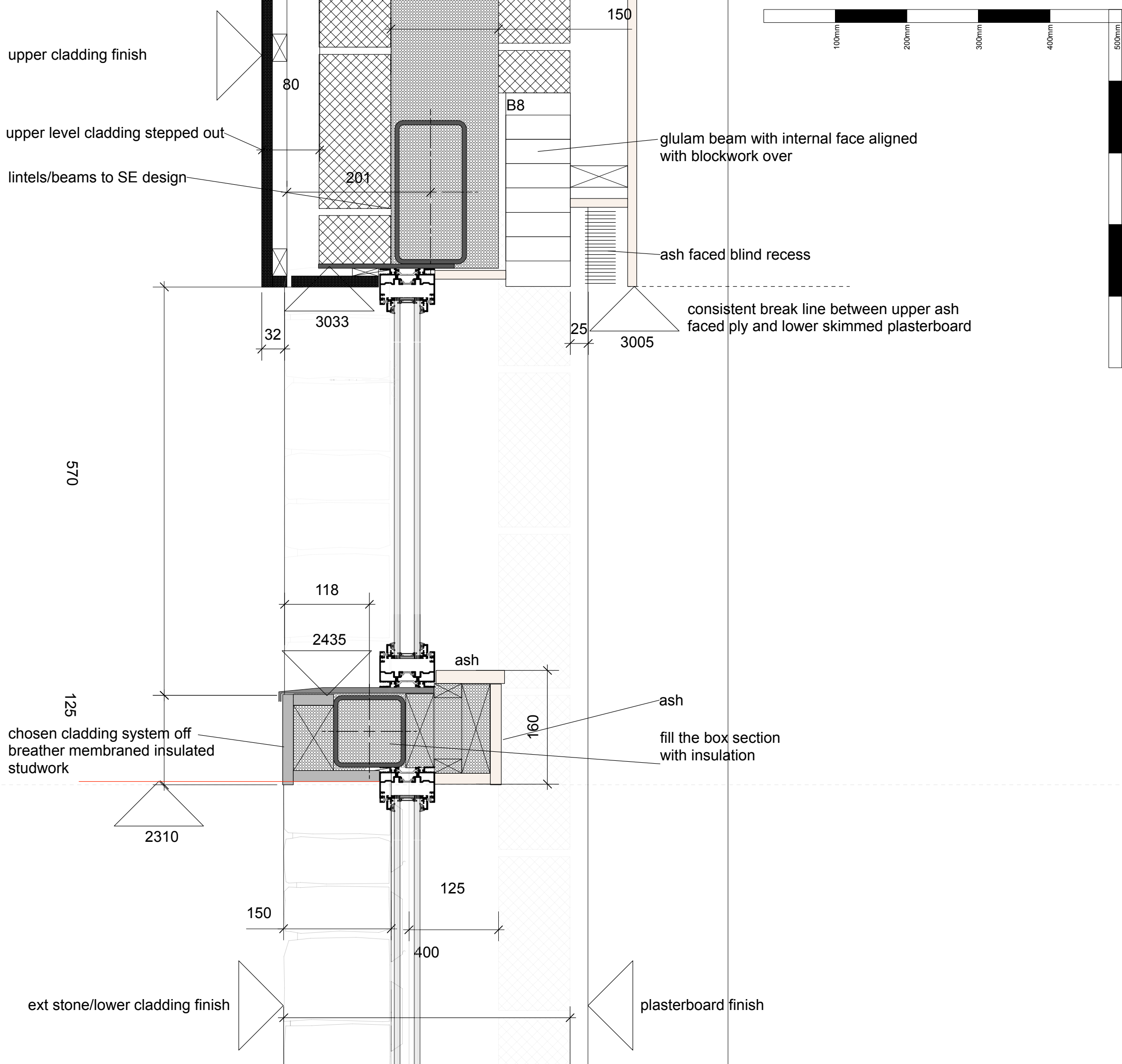
ext stone/lower cladding finish

plasterboard finish

glulam beam with internal face aligned
with blockwork over

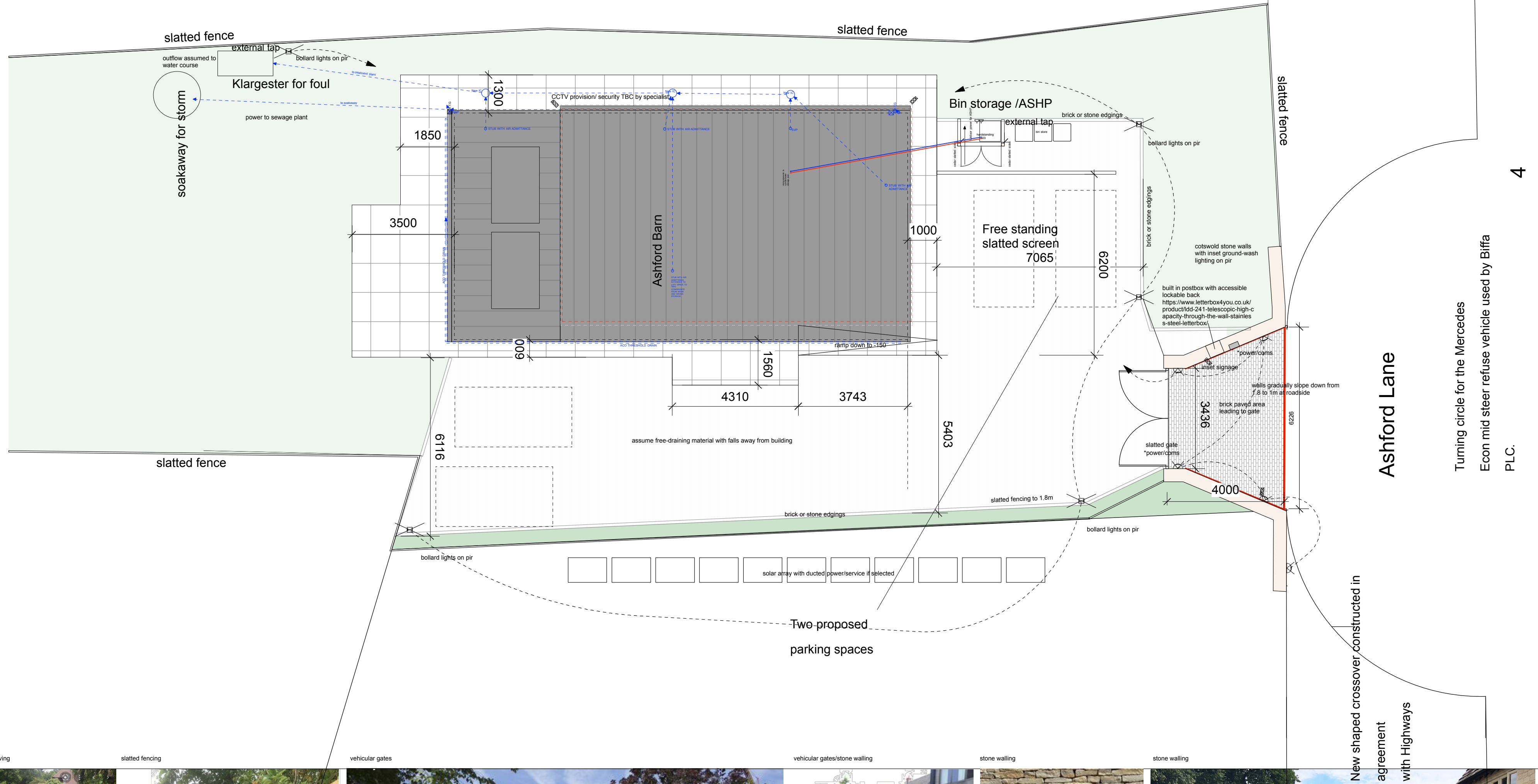
ash faced blind recess

consistent break line between upper ash
faced ply and lower skimmed plasterboard



REV
PROJECT:
CLIENT:
DRAWING TITLE:
DATE:
SCALE:
DRAWING NUMBER:
REVISION:

Ashford Barn, Tanworth in Arden
Mr & Mrs Harvey
Proposed Block Plan
April 2023
1:100 at A3
02



resin bound gravel/ brick paving

slatted fencing

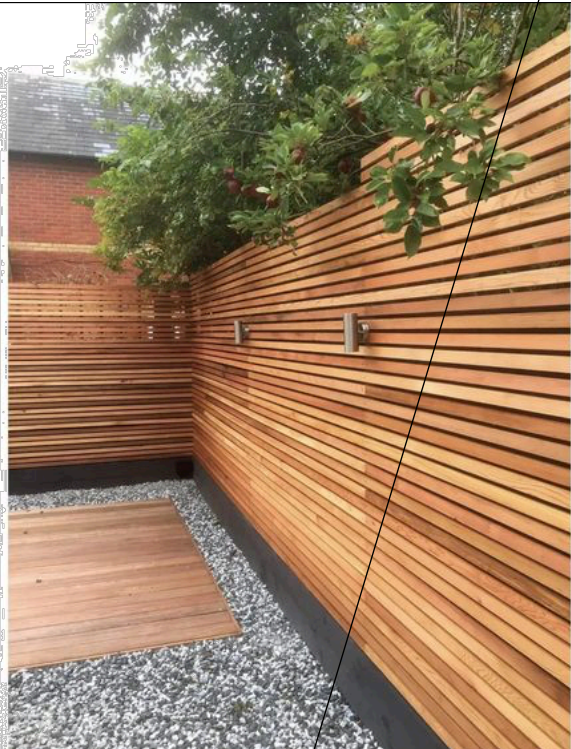
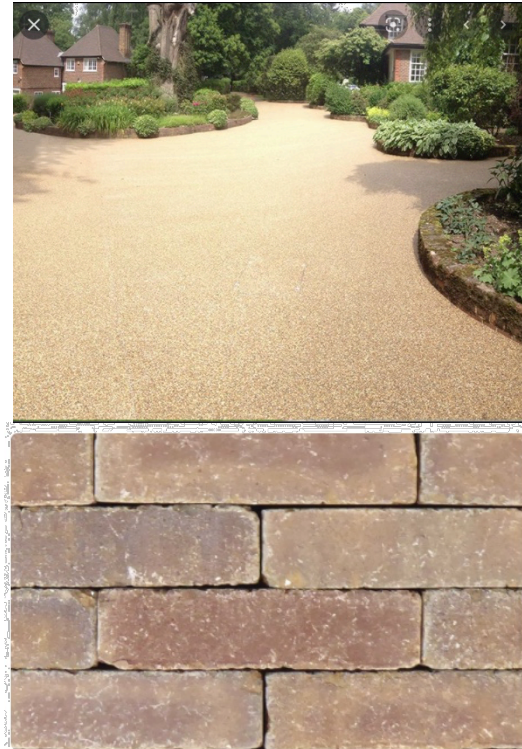
vehicular gates

vehicular gates/stone walling

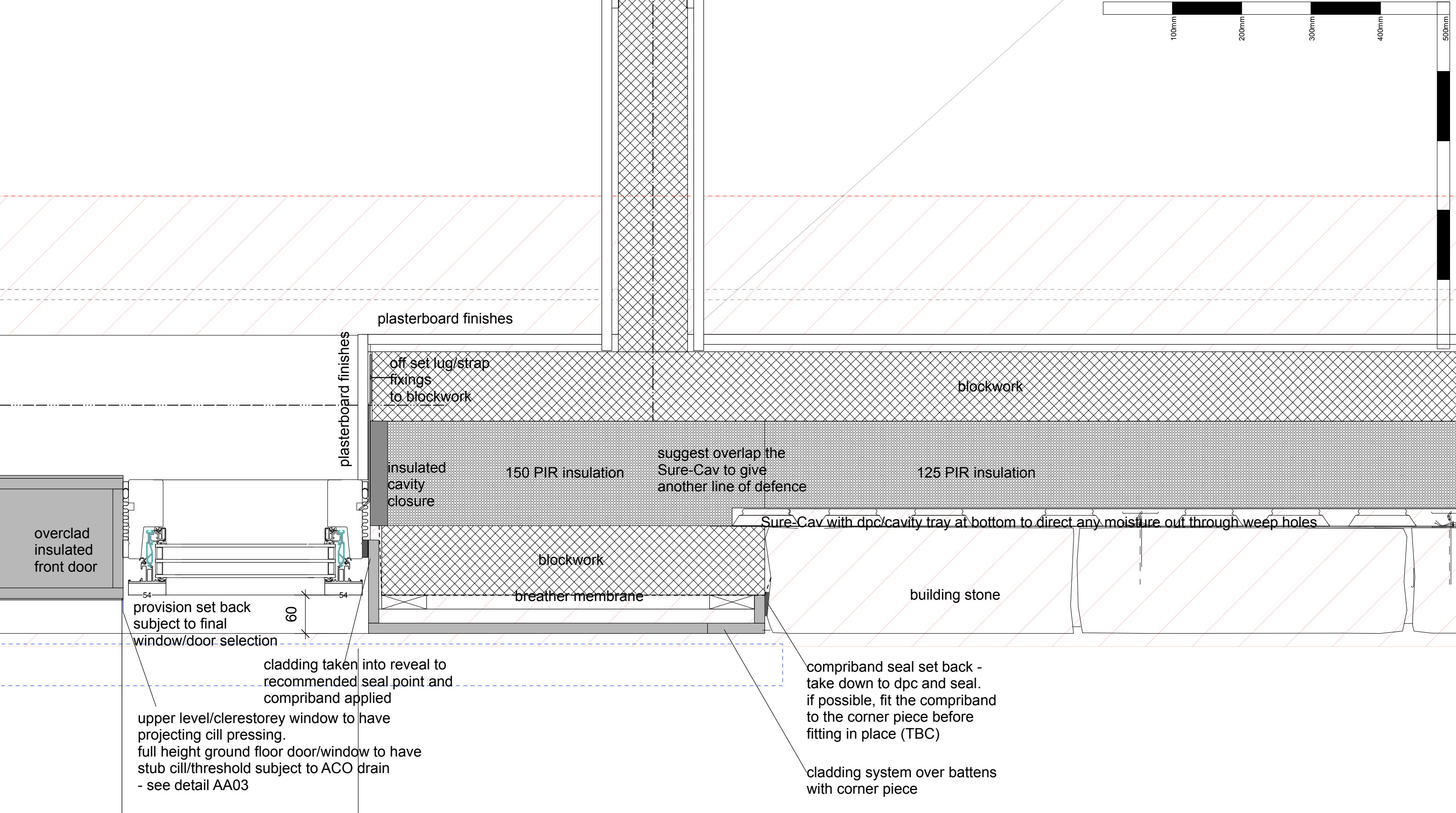
stone walling

stone walling

New shaped crossover constructed in
agreement
with Highways



position 1



DWG NO AA04

BENPARSONS
DESIGN

15 Moor Hall Drive
Sutton Coldfield
West Midlands
B75 6LP
0121 308 4361
bp@benparsonsdesign.co.uk
www.benparsonsdesign.co.uk

REV

PROJECT:
CLIENT:
DRAWING TITLE:
DATE:
SCALE:
JOB NUMBER:
DRAWING NUMBER:
REVISION:

Ashford Barn, Tanworth in Arden
Mr and Mrs Harvey
Detail Sheet 4: Plan detail of stone to cladding + window
MARCH 2023
1:5@A3
1439
AA04

Do not scale from drawing
All dimensions to be checked on site
Copyright of Ben Parsons Design