

WEST ELEVATION 1:100

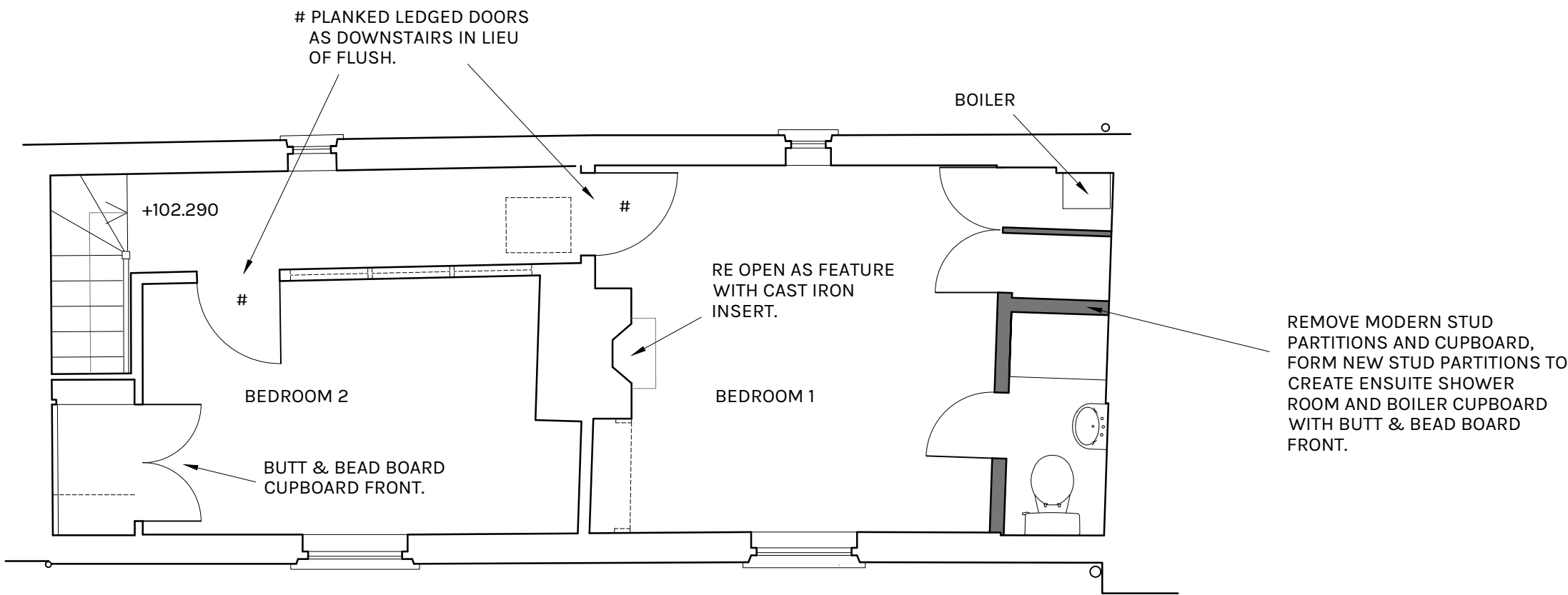
REPLACE MODERN FRONT DOOR.
APPLY KEIM MINERAL PAINT TO
WHOLE ELEVATION.

REMOVE MODERN SAND CEMENT RENDER
UP TO WINDOW CILL LEVEL & REPLACE
WITH LIME RENDER.
APPLY KEIM MINERAL PAINT TO WHOLE
ELEVATION.

EAST ELEVATION 1:100

REMOVE MODERN SAND CEMENT RENDER
UP TO WINDOW CILL LEVEL & REPLACE
WITH LIME RENDER.
APPLY KEIM MINERAL PAINT TO WHOLE
ELEVATION.

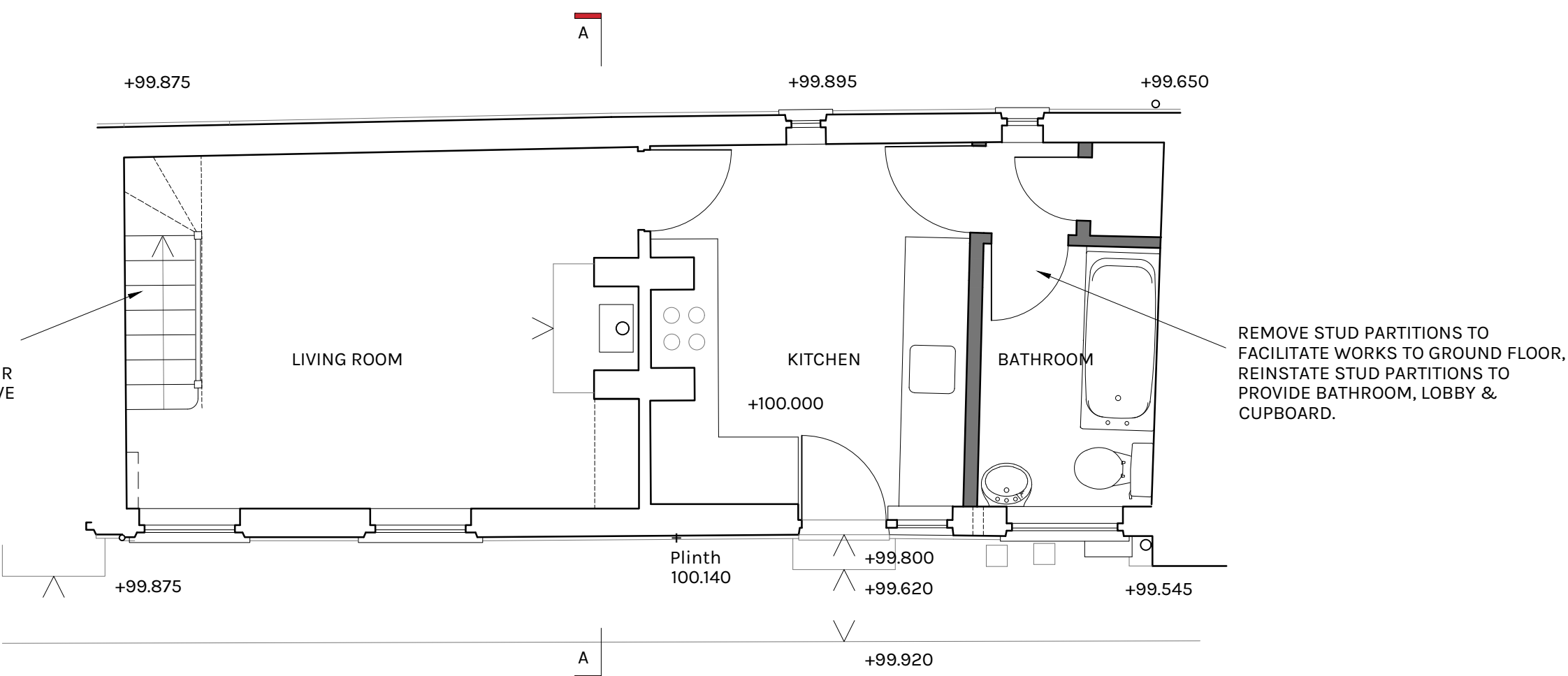
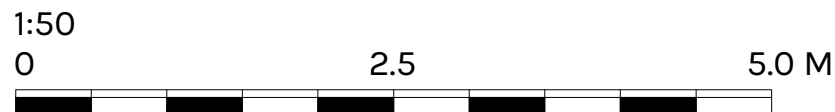
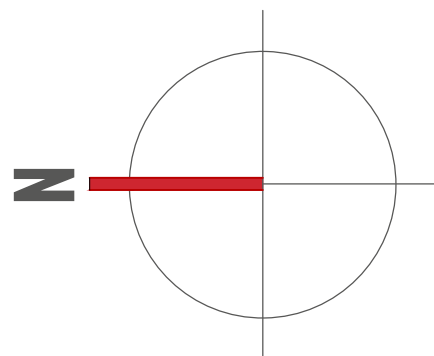
SECTION A-A 1:100



FIRST FLOOR PLAN 1:50

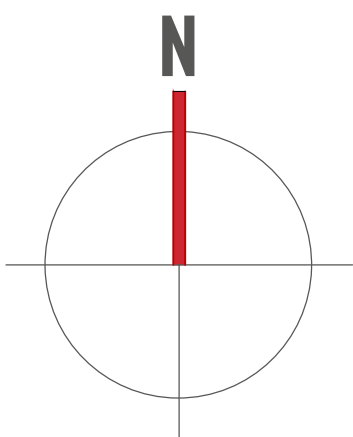


BLOCK PLAN 1:100



GROUND FLOOR PLAN 1:50

CAREFULLY REMOVE MODERN SCREED/CONCRETE
FLOORS AND LAY REPLACEMENT LIMECRETE
FLOORS INCORPORATING UNDERFLOOR HEATING,
100MM LIME SCREED, GEOTEXTILE MEMBRANE,
150MM GEOCELL FOAM GLASS AGGREGATE,
GEOTEXTILE MEMBRANE.



PRELIMINARY(A)

CRICKMAY
STARK
ARCHITECTS

13-14 Princes Street
Dorchester
Dorset
DT1 1TW
T 01305 262636
E info@crickmaystark.co.uk
www.crickmaystark.co.uk

9 & 10 SEYMOUR PLACE
BRIDPORT
DORSET
for ROBERT STAMP ESQ

SCHEME DESIGN
FLOOR PLANS BLOCK PLAN SECTION &
ELEVATIONS

SCALE 1:100 & 1:50 @ A1
DATE DECEMBER 2022
DRAWN P James

22/102/SK1