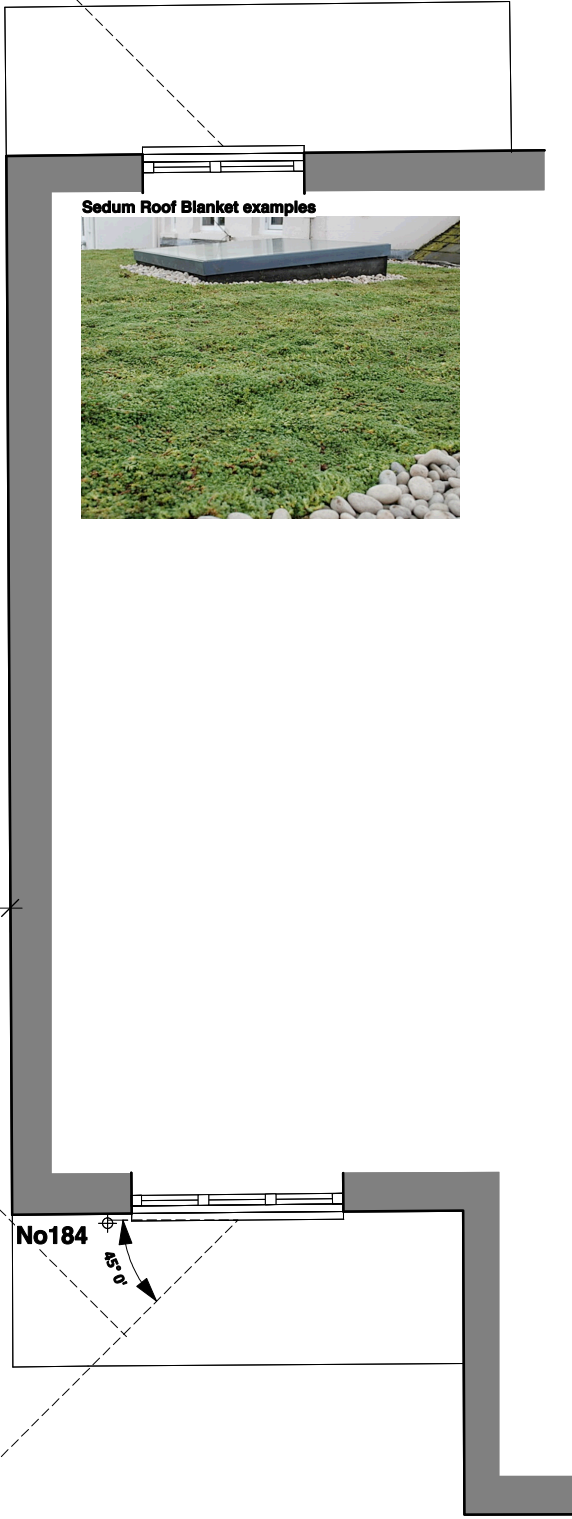
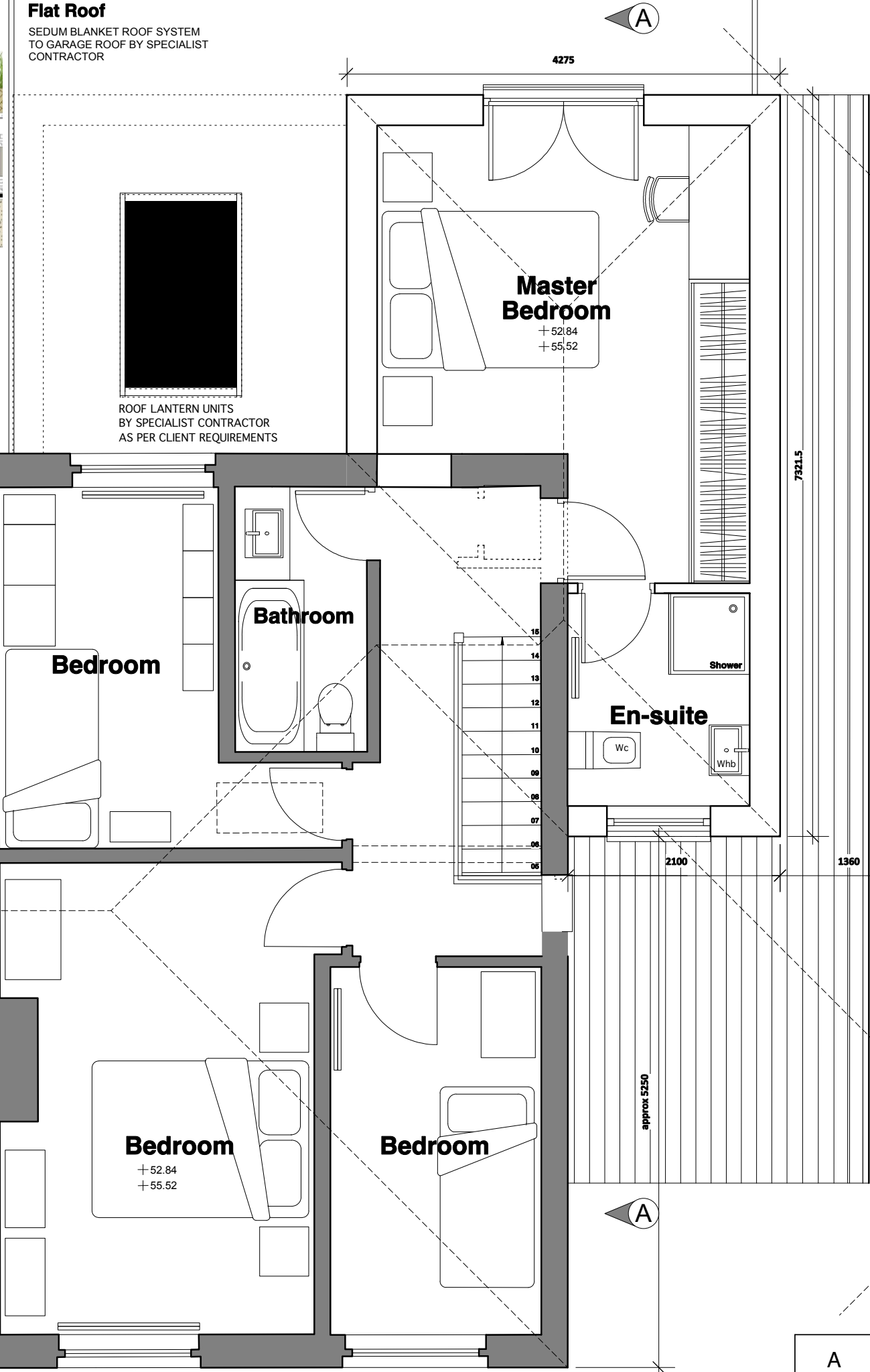
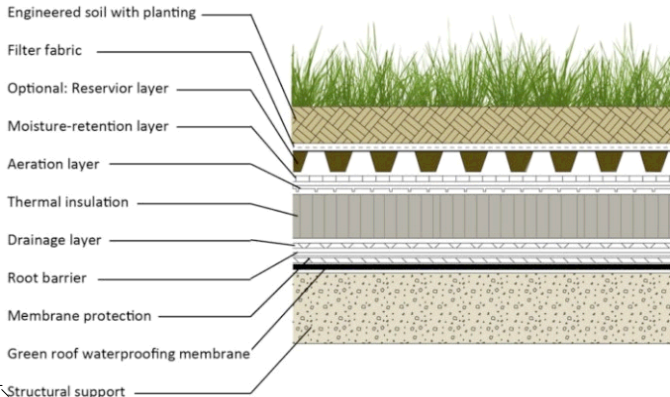
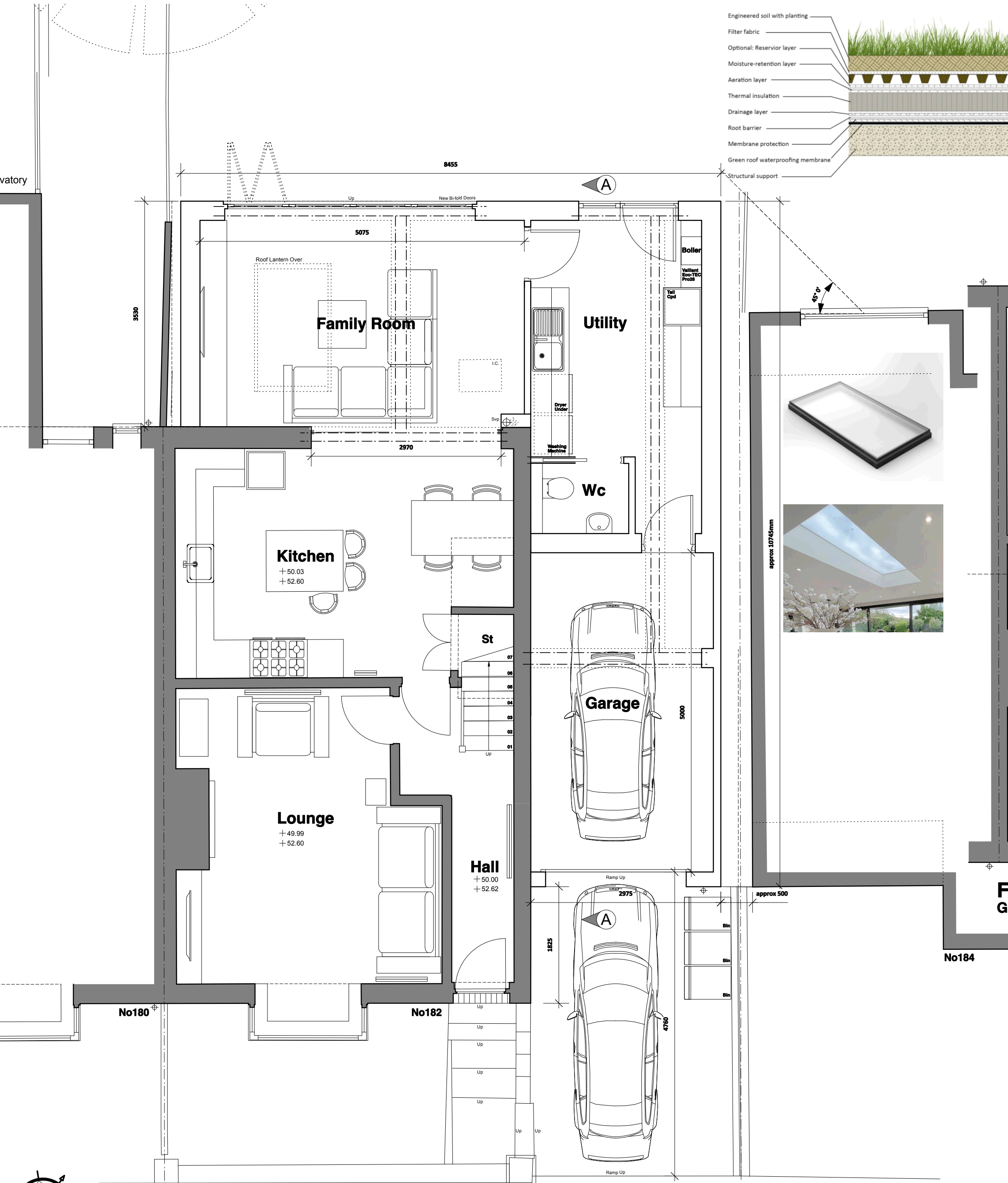


182 BLACK ROAD, MACCLESFIELD, CHESHIRE SK11 7LF



A	Overall Scheme amended following various discussions with the Planning & Conservation Officers to increase the separation distance between properties & set-back from main frontage
REVISION	

**NOTE TO ALL CONTRACTORS:-**  
Under NO circumstances must dimensions be scaled from this drawing. All contractors must be responsible for taking and checking all dimensions upon visiting site. All contractors must advise the Architectural Consultants immediately in writing of any discrepancies. The contractor must ensure that all items detailed on this drawing are included when tendering for the works. Any discrepancies must be resolved with the Architectural consultant before commencing works.

**DAVID**  
**NORRIS**  
**ASSOCIATES**  
Architectural &  
Building Consultants

8 CUMBERLAND STREET MACCLESFIELD CHESHIRE SK10 1DD TEL 01625 500151 FAX 01625 500151			
PROJECT			
Proposed Rear Extension & Alterations 182 Black Road, Macclesfield, Cheshire SK11 7LF			
DRAWING	SCALE	1:50	
Plans as Proposed	DATE	July 2022	
	DRAWN	Sn	
CONTRACT NO.	DRAWING NO.	STATUS	Planning
22/1419	03	REVISION	A